
X-LiteUser Guide

Ver 2.0.4 2017/07/26 更新
Ver 2.0.3 2016/03/01 更新
Ver 2.0.2 2015/11/11 更新
Ver 2.0.1 2015/08/10 更新
Ver 2.0.0 2015/04/30 更新
Ver 1.0.0 2015/03/30 作成

Introduction

This manual corresponds to X-Lite version 4.7.0 and later.

The content of this publication is intended to demonstrate typical uses and capabilities of the CounterPath X-Lite 4.6 softphone application from CounterPath Corporation. Users of this material must determine for themselves whether the information contained herein applies to a particular IP-based networking system.

X-Lite is a softphone from CounterPath that enables you to make VoIP voice and video calls, send and receive instant messages, share online status (presence) information, and exchange files.

OS Compatibility

X-Lite supports both Windows and Mac OSx versions listed below

OS Microsoft Windows Vista

Microsoft Windows 7

Microsoft Windows 8 (Desktop mode)

Microsoft Windows 8.1 (Desktop mode)

Mac OS X 10.8 or 10.9

Table of Contents

Introduction (Compatibility check)	-----	P. 2
Table of Contents	-----	P. 3
 Installation and configuration of X-Lite Windows version		
Installation Procedure (Windows Version)	-----	P. 5
Account settings screen (User Information Settings)	-----	P. 6
Making and Receiving a call (Windows version)	-----	P. 7-8
 Installation and configuration of X-Lite Macintosh version		
Installation Procedure (Macintosh version)	-----	P. 10
Account settings	-----	P. 11

Installation and Configuration of X-Lite Windows Version

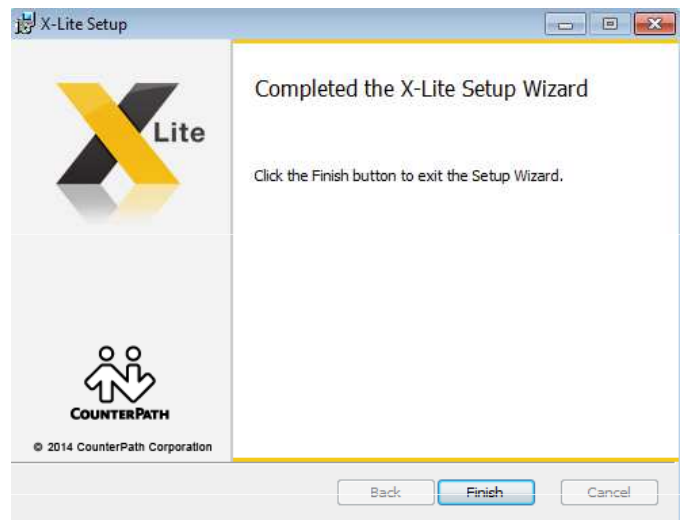
● Installation instructions

Installation (Windows version)

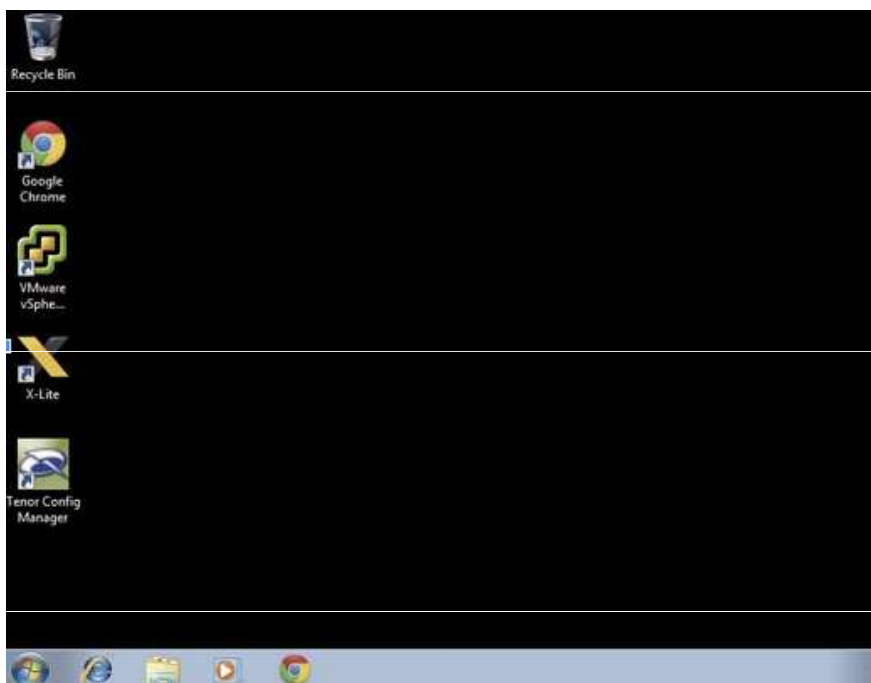
Please visit and download the latest version at

<http://www.counterpath.com/x-lite-download/> ← **リンク切れ 要確認**

1. Click and install the downloaded executable file.



2. Run X-lite by clicking its desktop shortcut icon.



● account settings

Open the " Account Settings " from the " Softphone " of the menu after X-Lite is started , please enter the following settings .

SIP Account

Account Voicemail Topology Presence Transport Advanced

Account name: Account 1

Protocol: SIP

Allow this account for

Call

IM / Presence

User Details

① * User ID: 0000

② * Domain:

③ Password: ●●●●●●

Display name:

Authorization name:

Domain Proxy

Register with domain and receive calls

Send outbound via:

Domain

Proxy Address:

Dial plan: #1\a\a.T;match=1;prestrip=2;

OK Cancel

① User ID

Enter a unique (UID).

Unique (UID) you can be found in the circle and a unique management screen of your administration page .Example: 0000123456

② Domain

Enter a unique login server that was set by a 1 .

Login server you can be found in the unique management screen and detail screen .

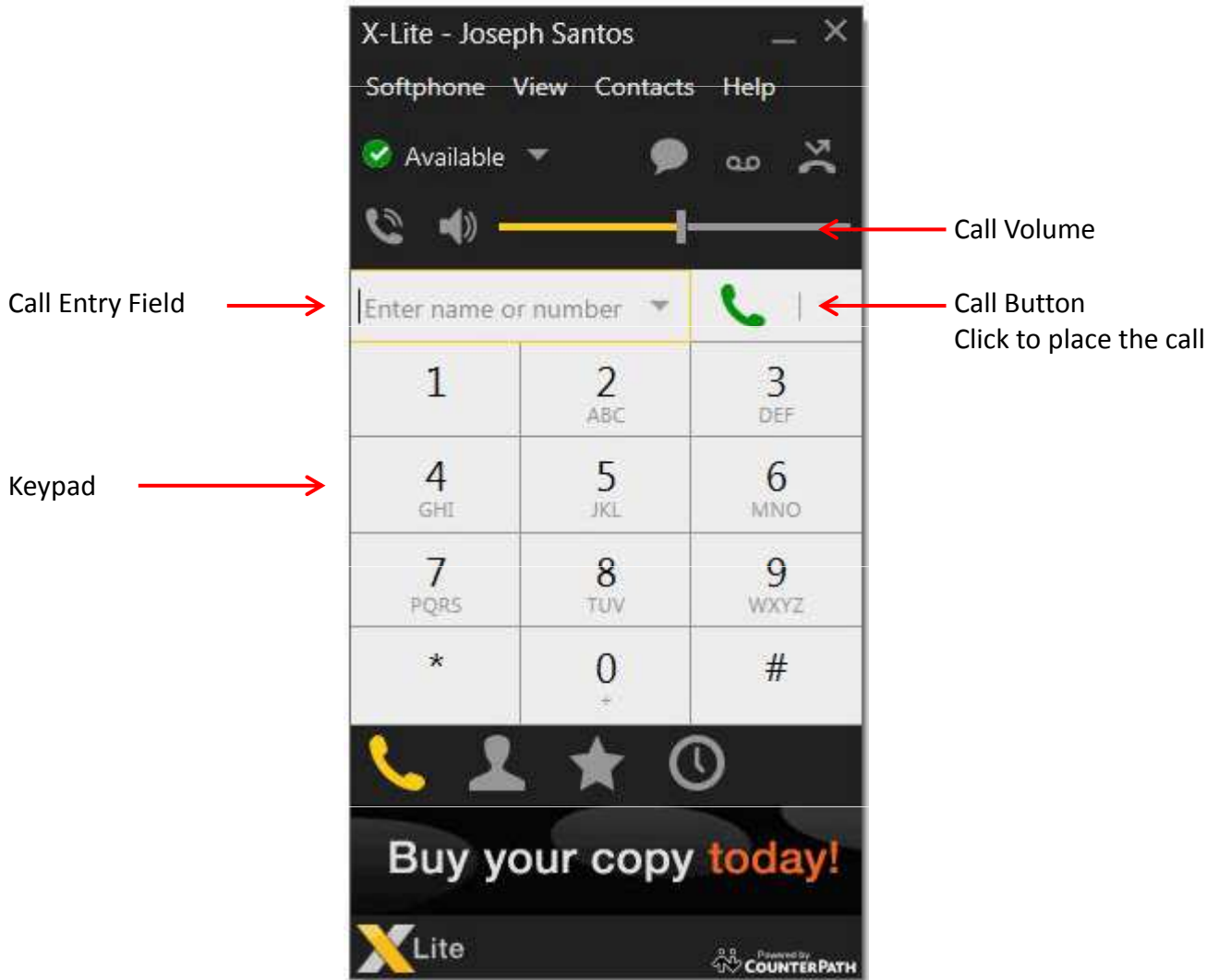
Example: XXXX.XXXX.ne.jp

③ Password

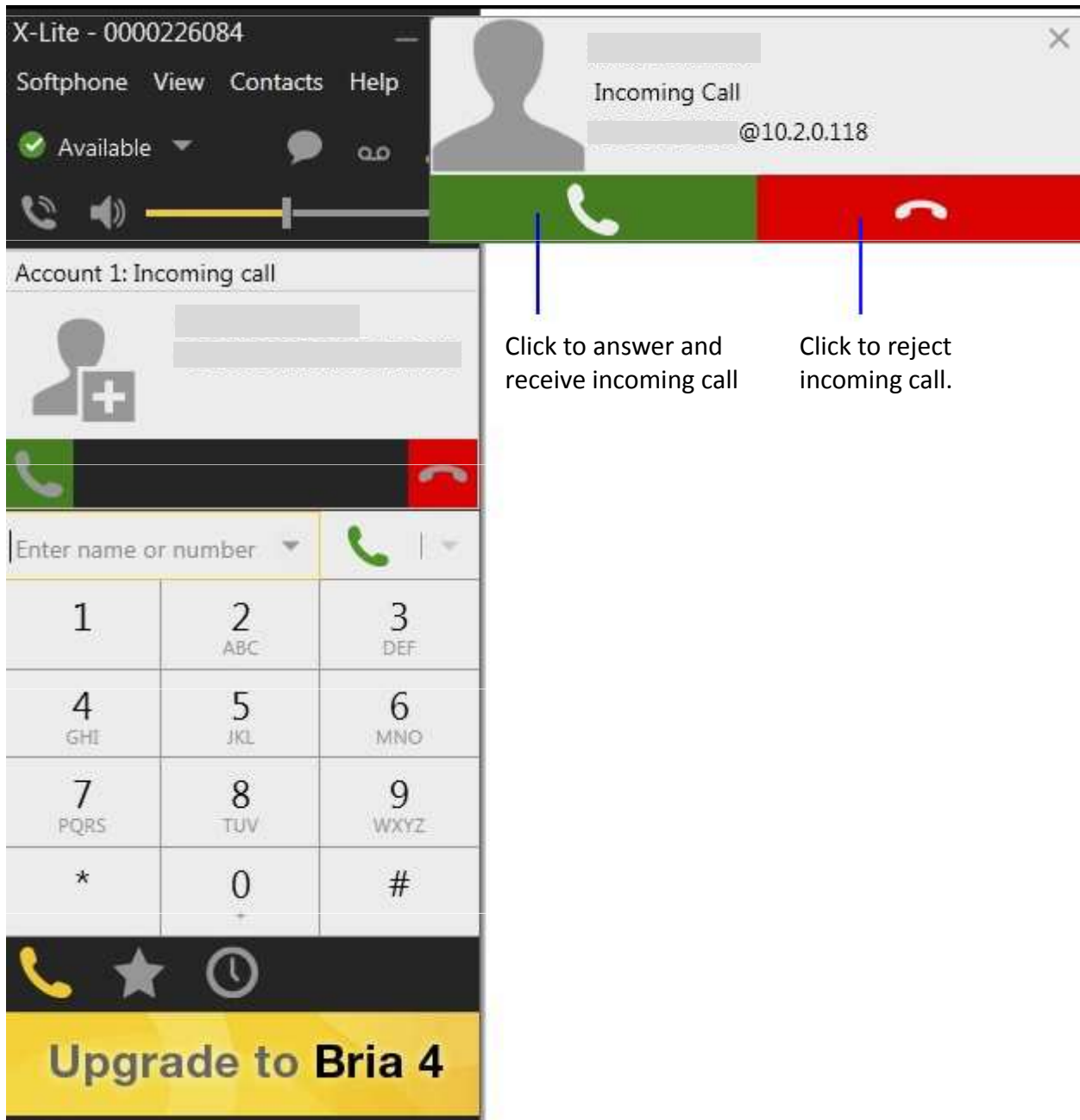
Enter a unique terminal password set in 1 .

Terminal password you can be found in the unique detail page.

● Make a phone call (Windows version)



● Receiving a call (Windows version)



● X-Lite Macintosh Version

**Installation and configuration of X-Lite
Macintosh Version.**

● Installation instructions

Installation (Windows version)

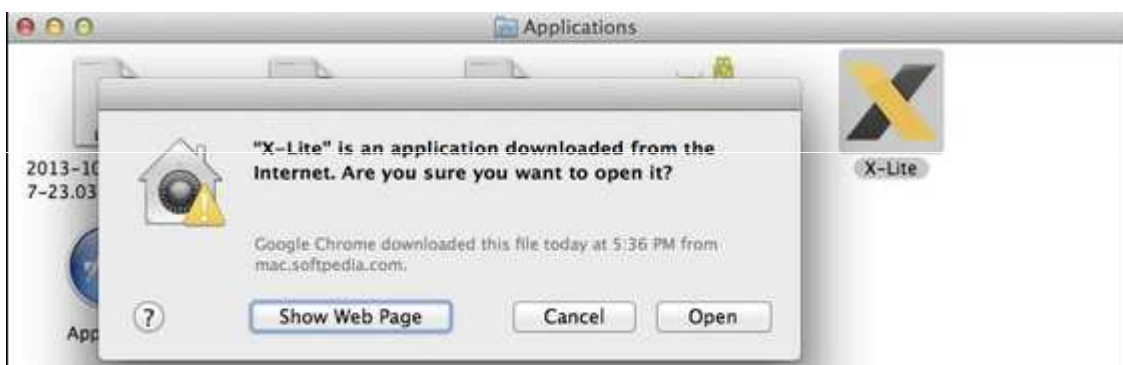
Please visit and download the latest version at

<http://www.counterpath.com/x-lite-download/> ← リンク切れ 要確認

1.Run the downloaded dmg file and continue to install by dragging the icon of X-Lite in the application folder



2.Click the shortcut icon of X-Lite in the application folder to start .



● account settings

Open the " Account Settings " from the " Softphone " menu After X-Lite is started , please enter the following settings .

SIP Account

Account Voicemail Topology Presence Transport Advanced

Account name: Account 1

Protocol: SIP

Allow this account for

Call

IM / Presence

User Details

① * User ID: 0000

② * Domain:

③ Password: ●●●●●●

Display name:

Authorization name:

Domain Proxy

Register with domain and receive calls

Send outbound via:

Domain

Proxy Address:

Dial plan: #1\a\a.T;match=1;prestrip=2;

OK Cancel

①User ID

Enter a unique (UID).

Unique (UID) you can be found in the circle and a unique management screen of your administration page .Example: 0000123456

②Domain

Enter a unique login server that was set by a 1 .

Login server you can be found in the unique management screen and detail screen .

Example: XXXX.XXXX.ne.jp

③Password

Enter a unique terminal password set in 1 .

Terminal password you can be found in the unique detail page.